

Technical parameters

Model	LB-A000G102	Rated power supply	220V~50Hz	Standby power consumption	0.09kW h/24h
Rated total power	2150W	Ambient temperature	4°C~40°C	Ambient humidity	≤90%
Heating power	2050W	Cooling Power	80W	Hot water production capacity	≥90°C 24L/h
Cooling water capacity	0.5L/h(≤15°C)	Water inlet pressure	0.1~0.4MPa	Anti-electric shock type	Class I
Water batch number	Zhejiang (04) Health Water Permit No. 0074 of 2024				
Output water quality	Comply with the requirements of the "Hygienic Safety Evaluation Standard for Water Supply and Distribution Equipment and Protective Materials for Drinking Water" (2001)				

Common Fault Phenomena, Fault Code Descriptions and Troubleshooting Methods

Fault phenomena	Probable cause	Troubleshooting methods
The display screen is not lit.	Power is not connected. The power switch is not turned on. The fuse is damaged.	Check if the power socket is properly plugged in. Turn on the power switch. Replace the integrated heating element.
Heating noise is loud	The machine was not placed properly.	The machine is vertically installed on the wall.
Display E1	NTC line detachment. Water outlet temperature sensor failure.	Check if the NTC plug is inserted properly. Replace the heating element.
Display E2	Low water level or no water. The water level switch is damaged. The inlet solenoid valve is blocked or damaged.	Check if the water source is open, open the water source to replenish water. Replace the water tank. Reverse flush or replace the solenoid valve.
Display E4	Short circuit fault of silicon control (automatic heating upon power on). The heating film was burned out.	Replace the integrated heating element. Replace the integrated heating element.
Display E5	Short circuit of the heating film. Silicon control malfunction. The thermostat is open circuit.	Replace the integrated heating element. Replace the integrated heating element. Unplug the power supply and wait for 10 minutes, then manually reset the thermostat.

Fault phenomena	Probable cause	Troubleshooting methods
Display E6	Communication failure	The serial port cable is not making good contact, replace the serial port cable. Main control board communication chip malfunction, replace the integrated heating element. Replace the key display board due to the communication chip failure of the key panel.
Display Eb	The water pump is open circuit.	Check if the plug is inserted properly.
Display E7	Zero-crossing circuit failure.	Replace the integrated heating element.
Display E8	Water inlet temperature ≤3°C	The waterway is frozen. Wait until the water temperature returns to normal before using.
Display E9	Short circuit of the water pump.	Replace the water pump.
Display ER	Water leakage fault.	Check for water leakage in the internal silicone tube.
Display EP	Cleaning and drainage completed.	Turn off the machine, restart the power supply and enter the working state.
Display H1	Water inlet temperature sensor failure.	Replace the inlet water temperature sensor.
Display H2	Voltage sensor failure	Replace the integrated heating element.
Display H3	NTC temperature sensing of heating element ≥106°C	Press the water outlet button, after the room temperature water comes out, H3 disappear automatically. If H3 can't disappear, the DC pump is damaged, replace it.
Display H4	NTC temperature sensing of heating element ≥110°C	Press the water outlet button, after the room temperature water comes out, H4 disappear automatically. If H4 can't disappear, the DC pump is damaged, replace it.
Continuous dripping of water.	The water outlet has foreign objects. Overflow blocked.	Clean the water outlet. Clear the overflow outlet.
No heating	The anti-dry-burning device has disconnected.	Unplug the power supply and wait for 10 minutes. Then manually reset the thermostat.
Heat and spray steam	Factory-set temperature is too high.	Reset the boiling point.
The hot water output has decreased. Or the temperature decreased.	The power supply voltage is lower than 220V~ The heating element is damaged.	Check the power supply voltage. Replace the integrated heating element.
No cooling	The ice core is damaged.	Replace the ice core.

*If the product related parameters are adjusted, no further notice will be given.

Packing list

Pipeline water dispenser	1	PT040404 tee joint	1
The hanging board of installation	1	Self-tapping screw	4pcs
1/4" PE pipeline	2 meters	Expansion tube	4pcs
PLC0404 L-shaped joint	1	Instruction book	1
Blue clip	5 pcs	Washer	2pcs
Warranty card	1	Certificate	1

List of food grade contact materials in the product

Part name	Part material	Executive standard	Part name	Part material	Executive standard
Water inlet solenoid valve	POM/ metal plate	GB/T17219-1998, Hygienic Safety Evaluation Standard for Drinking Water Distribution Equipment and Protective Materials (2001)	PP connector	PP	GB/T17219-1998, Hygienic Safety Evaluation Standard for Drinking Water Distribution Equipment and Protective Materials (2001)
PE pipe	PE		Water tank	PP	
Connector	POM		Silicone tube	Food grade silicone	

Note: The components listed in the detailed list are a summary of the main components included in different models of products. Whether this product includes a certain component is subject to the actual configuration of the product.

Matters need attention

Move When moving significantly, please turn off the power, unplug the power cord and drain the water from the machine.

Installation Place the machine stably and avoid placing it at too large an angle.

Power precautions Do not over-twist, bend or twist the power cord, otherwise the wire core may be exposed or broken. If the power cord is damaged, to avoid danger, it must be replaced by professionals. Users are not allowed to replace it by themselves. Do not use inappropriate electrical sockets.

Power cord To prevent fire, electric shock or damage, follow these instructions when using the power cord and socket: The plug must be inserted into a three-pole safety socket with a grounding wire. Users must not modify the plug. Before maintenance or moving the machine, please turn off the power and unplug the power cord.

In use If the product makes abnormal noises or odor, please stop using it immediately, unplug the power cord and empty the wastewater in the water collection tray in time to prevent overflow and affect usage. If it is not used for a long time, please cut off the power and unplug the power cord.

Usage restrictions Do not use in the following situations, as electric shock, fire, and other injuries may occur: Do not wipe the machine body with organic solvents such as gasoline. Keep away from high temperatures and place in a cool, dry and ventilated environment. Do not use outdoors, in direct sunlight or in places where water may splash.

Ningbo Luckboil Electrical Appliance Co., Ltd.

Address: West end of Hengfeng Road, Fangqiao Industrial Zone,

Fangqiao Street, Fenghua, Ningbo, Zhejiang.

E-MAIL: lkb@luckboil.com

TEL: 4009 260 180

URL: www.luckboil.com



Hot and Cold Smart Wall-Mounted Water Dispenser

LB-A000G102

Please read this manual carefully before use and keep it properly



Attention

Please use clean water sources such as purified water or direct drinking water.

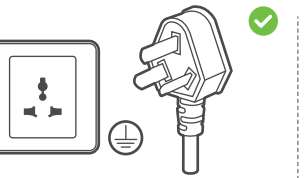
The default for the first use is room temperature water / After a long power outage, the default is also room temperature water.

When reusing this product after a long-term of disuse, it is necessary to first flush the heating system pipeline with room temperature water, and then allow heating.

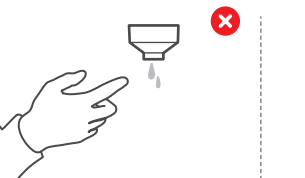
It is recommended that users clean the water tank at regular intervals.



Warning



When using, the plug must be inserted into a three-pole safety socket with a grounding wire, and users are not allowed to change the plug without authorization.



Please do not touch the hot water outlet directly with your hands to avoid scalding.



This product is strictly prohibited for children to operate to avoid scalding from hot water.

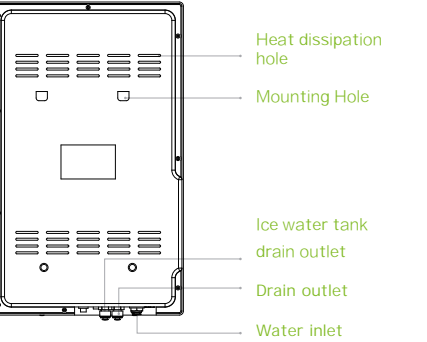
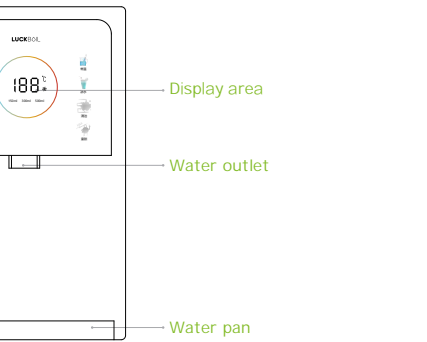
Product feature

This product adopts a new generation of rapid heating element, which can quickly heat water to boil within two seconds.

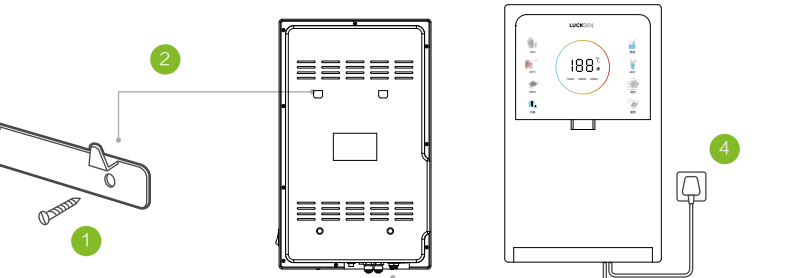
With below features:

- 1. Simple and ultra-thin wall-mounted design.
- 2. Instant heating and drinking to prevent repeated heating.
- 3. Energy-saving and power-saving.
- 4. Child lock design to prevent children from getting burned, safer and more practical.
- 5. With water leakage protection and multiple anti-dry burning functions.
- 6. Nano-thick film heating element.

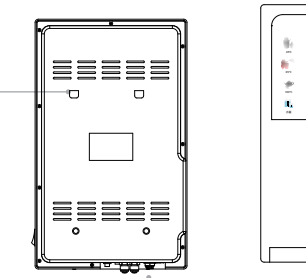
Product appearance diagram



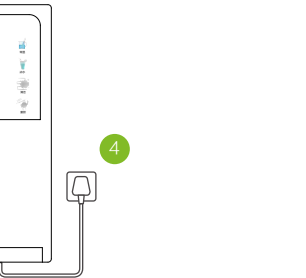
Product installation



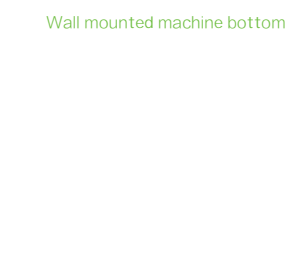
1. Take out the machine hanging board and fix it in the position you need to install it with expansion screws



2. Align the mounting hole on the back of the machine with the protruding point of the hanging plate, and move it downwards to fix the machine



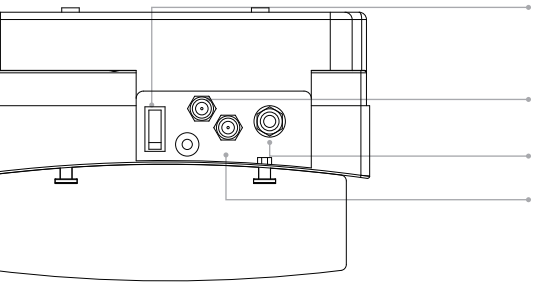
3. Connect the connecting pipe to the machine's water inlet



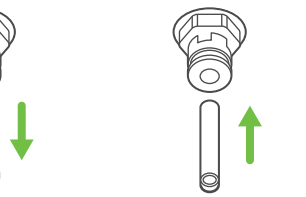
4. Connect to power supply. Machine installation completed

Product installation

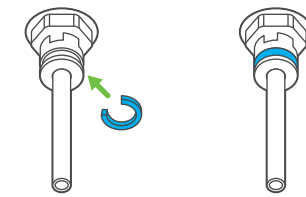
Wall mounted machine bottom



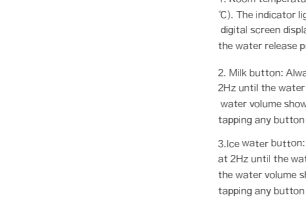
Installation of water purification interface



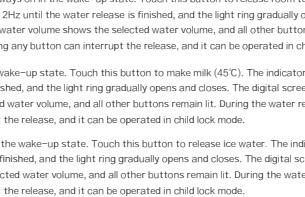
1. Remove the protective plug



2. Aim at the hole and insert the 1/4 inch pipe forcefully to the end

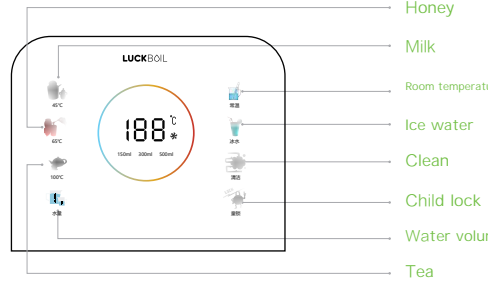


3. Insert blue clip



4. Installation is completed

Instruction



- Room temperature button:** Always on in the wake-up state. Touch this button to release room temperature water (25°C). The indicator light flashes at 2Hz until the water release is finished, and the light ring gradually opens and closes. The digital screen displays 25°C, the water volume shows the selected water volume, and all other buttons remain lit. During the water release process, tapping any button can interrupt the release, and it can be operated in child lock mode.
- Milk button:** Always on in the wake-up state. Touch this button to make milk (45°C). The indicator light flashes at 2Hz until the water release is finished, and the light ring gradually opens and closes. The digital screen displays 45°C, the water volume shows the selected water volume, and all other buttons remain lit. During the water release process, tapping any button can interrupt the release, and it can be operated in child lock mode.
- Ice water button:** Always on in the wake-up state. Touch this button to release ice water. The indicator light flashes at 2Hz until the water release is finished, and the light ring gradually opens and closes. The digital screen displays 00°C, the water volume shows the selected water volume, and all other buttons remain lit. During the water release process, tapping any button can interrupt the release, and it can be operated in child lock mode.
- Honey button:** Always on in the wake-up state. Touch this button to make honey (65°C). The indicator light flashes at 2Hz until the water release is finished, and the light ring gradually opens and closes. The digital screen displays 65°C, the water volume shows the selected water volume, and all other buttons remain lit. During the water release process, tapping any button can interrupt the release, and it can't be operated in child lock mode.
- Tea button:** Always on in the wake-up state. Touch this button to make tea (100°C). The indicator light flashes at 2Hz until the water release is finished, and the light ring gradually opens and closes. The digital screen displays 100°C, the water volume shows the selected water volume, and all other buttons remain lit. During the water release process, tapping any button can interrupt the release, and it can't be operated in child lock mode.
- Child lock button:**
 - Instant unlock: Touch the child lock button in the wake-up state, the child lock button light will display 10%. If no operation within 20 seconds, the child lock will automatically recovers and enters the standby state after another 10 seconds.
 - Long term unlock: Touch and hold this button for 5s to permanently unlock the child lock (the child lock indicator light flashes 3 times and then 10% lights up, and the buzzer emits a beep warning sound). Touch and hold this button again for 5s to recover the automatic child lock function (the child lock light flashes 3 times and then lights up normally, and the buzzer emits a beep warning sound). The system remembers the user's selection of this function and will power on again to maintain the previous child lock setting. When the child lock is locked, it can release ice water, 25°C room temperature water and 45°C warm water.
- Clean button:** Always on in the wake-up state, touch for 3s, the indicator flashes at 2Hz until the water release is finished and the screen displays a 50-second countdown. To perform automatic cleaning function, first the machine will fill the water tank with water automatically before emptying. After emptying, the digital screen displays EP indicating that the machine cannot be operated. After the cleaning function is completed, the machine needs to be powered on (at the bottom) again before it can enter the normal working condition.
- Water volume button:** Always on in the wake-up state. Touch this button to select the water volume between 150ml, 300ml and 500ml. The default water volume is 300ml when powered on. The system will remember the user's water volume selection.
- Boiling point adjustment:** Tea button+Cleaning button: press both buttons for 5s at the same time to enter the boiling point adjustment interface (only the tea button+cleaning button are lit, the other buttons and the light ring are off). Short press the tea button, the boiling temperature is reduced by 1°C, short press the cleaning button, the boiling temperature is increased by 1°C. (Default: 92°C, temperature adjustment range: 87°C to 97°C), no operation or after 5 seconds of operation, the setting will auto matically exit and take effect. It will not be cleared after power off.
- Memory function:**
 - In unlocked state: the water volume memory selects the last water volume, the water temperature displays the last selected temperature. When switching modes, the water temperature display switches to the default temperature of the corresponding mode.
 - Memory unlocked child lock function for a long time, and it will not be cleared after power off.
- Cooling function:** Turn on the cooling power switch (at side) to start cooling. During the cooling process, the snowflake indicator flashes at a frequency of 1Hz. After the cooling is completed, the ice water enters the ice tank and enters the insulation state, the snowflake indicator stays on.
- Hidden function:** Long press the child lock and room temperature button for 3s, the machine will emit a "beep beep" sound to cancel the automatic standby mode. Press and hold the child lock+room temperature button again for 3s, machine emits a "beep beep" sound, recovering to automatic standby mode.